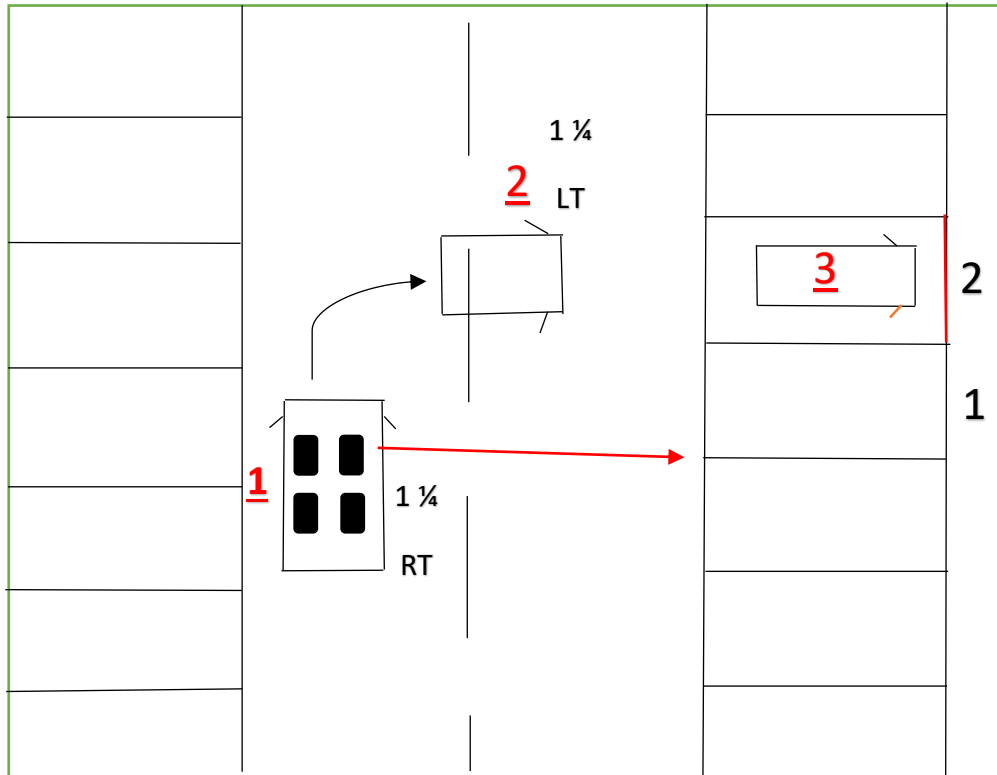


FORWARD PARKING



1. Line your shoulder..... the white line and stop. Do your checks, signal if needed. Do a full lock (1 ¼ turn) and hold.
2. When the car looks straight undo full lock (1/14 turn) opposite way so the wheels are straight.
3. Look under the right side door mirror whenkerb stone, stop, handbrake and neutral. You can open the door to check if you are in. If you feel it is not good- all around checks, look rear window- go back and come forward.

Common reasons to fail:

- Not doing basic checks.
- Not stopping for passengers or cars.
- Not checking rear window when going back.